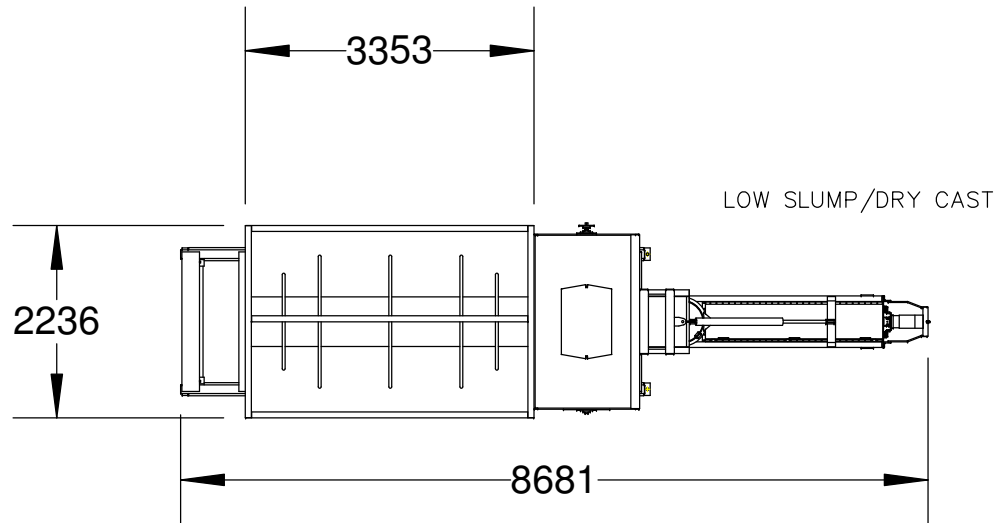
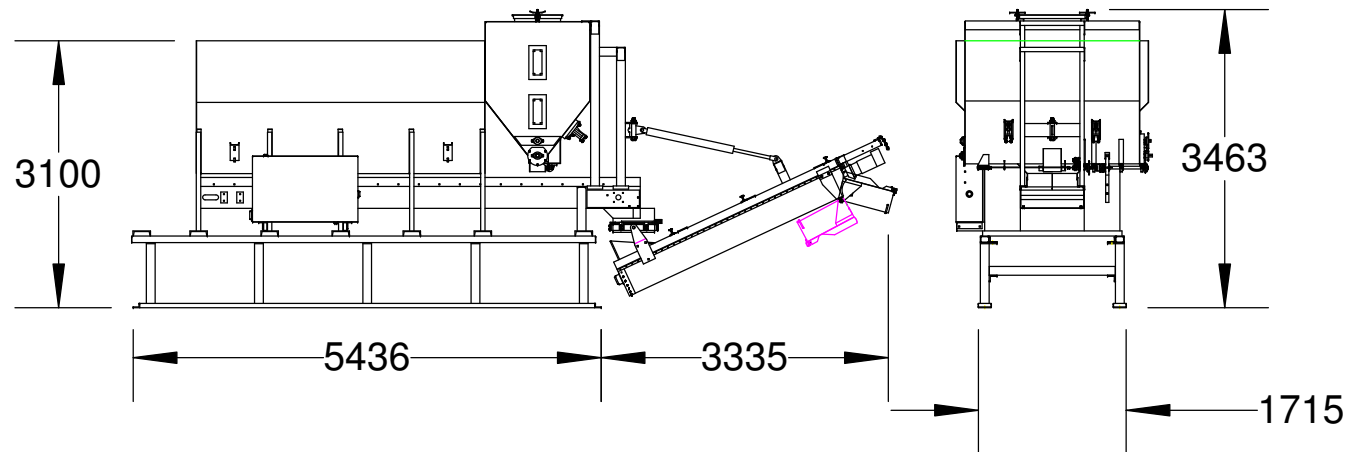


LTR	UTILITY	SPECIFICATION
W	WATER PLACEMENT	225 L/MIN @ 40 PSI
A	AIR PLACEMENT	11 CFM @ 100 PSI 0.31 CMM @ 100 PSI
E1	ELECTRICAL PLACEMENT DRY CAST MOTOR ONLY	300 AMP, 3 PHASE @ 415 VOLTS (125 HP MOTOR @ 176 FLA)
UNIT WEIGHT		
EMPTY		FULL
4318 KG		22,630 KG



ALL DIMENSIONS ARE APPROXIMATE AND FOR REFERENCE ONLY



DESCRIPTION. GENERAL ARRANGEMENT

TITLE. SCD8M-200 DRY CAST

DATE. 20/03/2007

PART No.

DRG. No. SCD8200

DRG. BY. R.A.Calder

SCALE. NONE

COPYRIGHT.

This drawing is the property of ARMCON Ltd and must not be Copied or reproduced without Written consent.